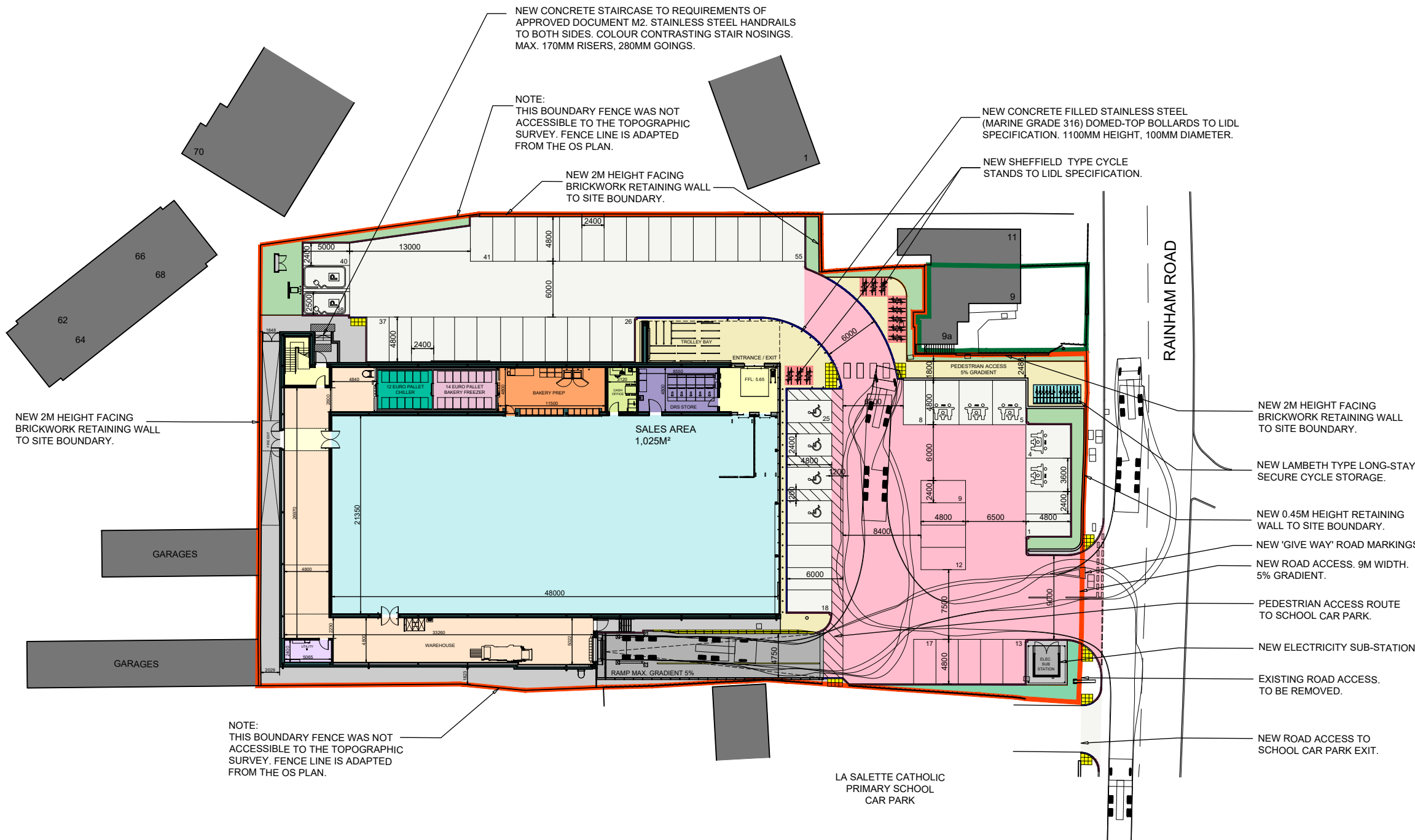
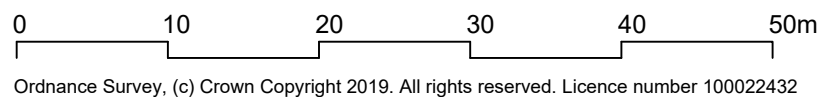
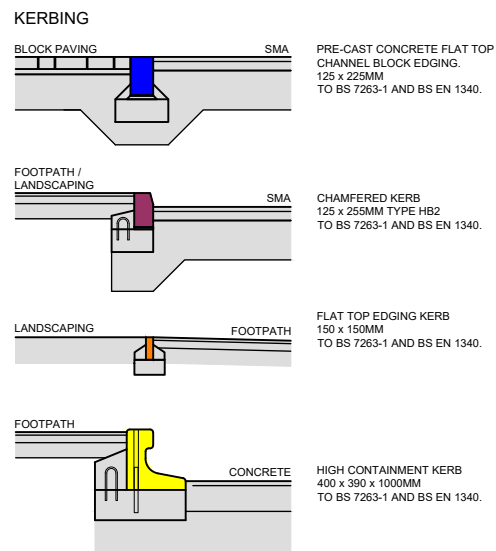


Rev	Date	Reference	Drawn / Chk'd
P02	2021/02/14	UTILITY & DRS REVISED.	AA AA



LEGEND

- TWO-LAYER STONE MASTIC ASPHALT TO LIDL SPECIFICATION AND BS EN 13108-5. GRADIENTS TO BE AS INDICATED ON PLANS, FALLING AWAY FROM STORE. MINIMUM 44 TON HGV LOADING CAPACITY.
- THREE-LAYER POLYMER MODIFIED STONE MASTIC ASPHALT TO HGV ROUTE TO LIDL SPECIFICATION AND BS EN 13108-5. GRADIENTS TO BE AS INDICATED ON PLANS, FALLING AWAY FROM STORE. MINIMUM 44 TON HGV LOADING CAPACITY.
- 200 x 100 x 80MM THICK INTERLOCKING CONCRETE BLOCK PAVING TO FRONT OF STORE PATHS AND TROLLEY AREA. STRETCHER BOND LAYING PATTERN. NON-BEVELLED PENCIL-EDGE PAVING. FLUSH THRESHOLDS. GRADIENTS TO BE AS INDICATED ON PLANS, FALLING AWAY FROM STORE. BLOCK COLOUR: DARK GREY / ANTHRACITE.
- REINFORCED CONCRETE RAMP TO DELIVERY BAY TO LIDL SPECIFICATION WITH BRUSHED FINISH PERPENDICULAR TO THE DIRECTION OF TRAVEL.
- ASPHALTIC CONCRETE FOOTPATHS TO LIDL SPECIFICATION AND BS EN 13108-5. GRADIENTS TO BE AS INDICATED ON PLANS, FALLING AWAY FROM STORE.
- TACTILE PAVING TO DIAGRAM 1 OF APPROVED DOCUMENT M2. COLOUR: BUFF.
- CORDUROY HAZARD WARNING SURFACE TO TOP AND BOTTOM LANDINGS OF EXTERNAL STAIRCASE IN ACCORDANCE WITH DIAGRAM 4 OF APPROVED DOCUMENT M2.



Client
Lidl Great Britain Ltd

Project
**Lidl
 Rainham Road, Rainham**

Title
Surface Dressing Plan

Drawing Ref.	Revision
4781-0110	P02
Scale - unless otherwise stated 1:500 @ A3	Status S0
Issued For Preliminary	



KLH architects
 The Old Steelyard, Poplar Lane
 Sproughton, Ipswich, IP8 3HL
 t.01473 689532
 klh@klharchitects.com
 www.klharchitects.com