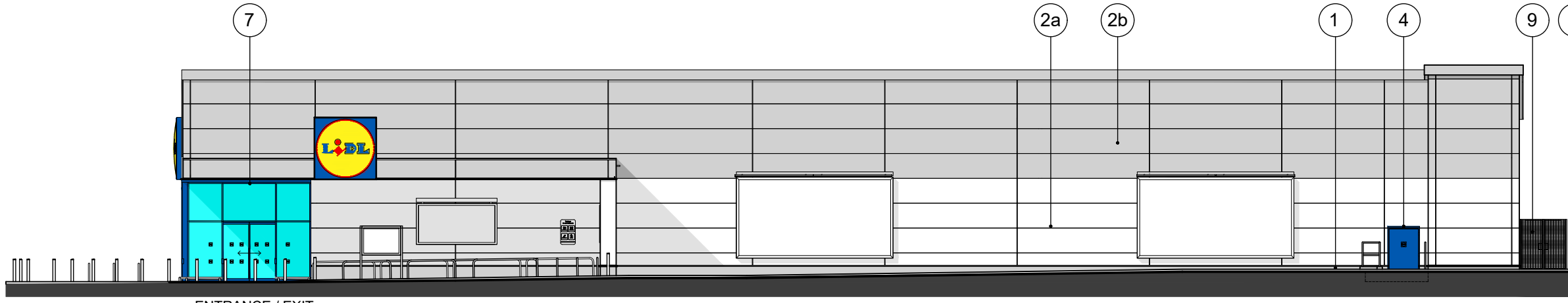
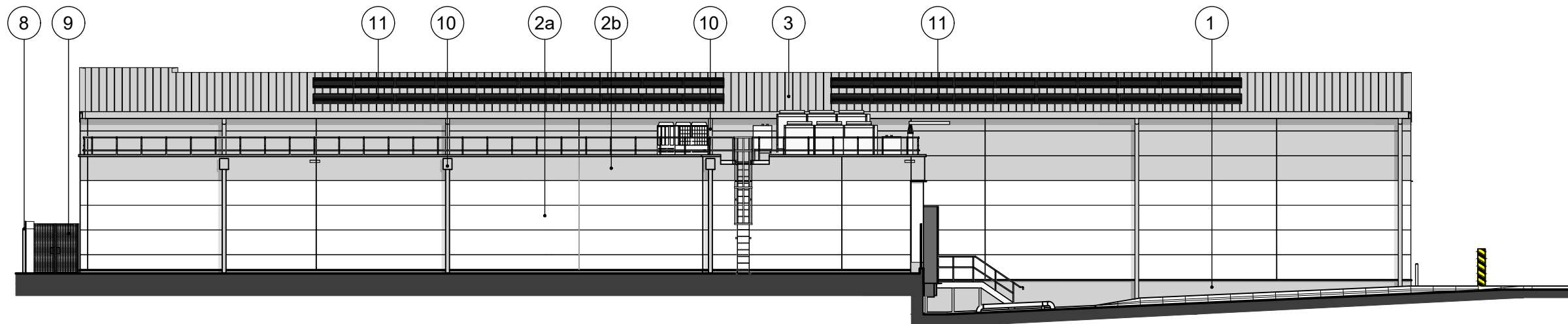


Rev	Date	Reference	Drawn / Chk'd
P05	2021/02/14	WELFARE WINDOW MOVED.	AA AA

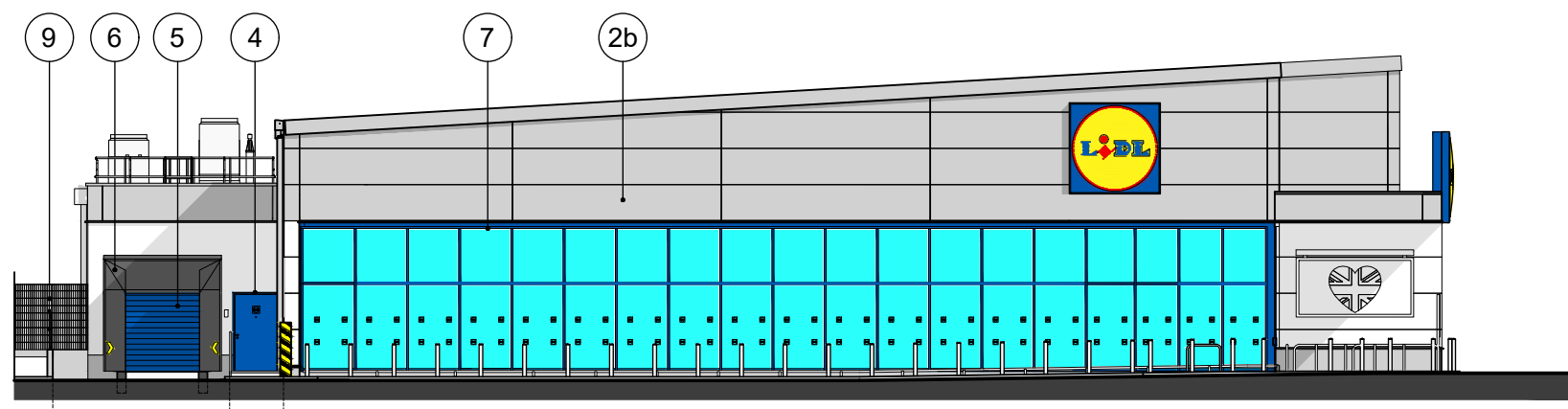


ENTRANCE / EXIT

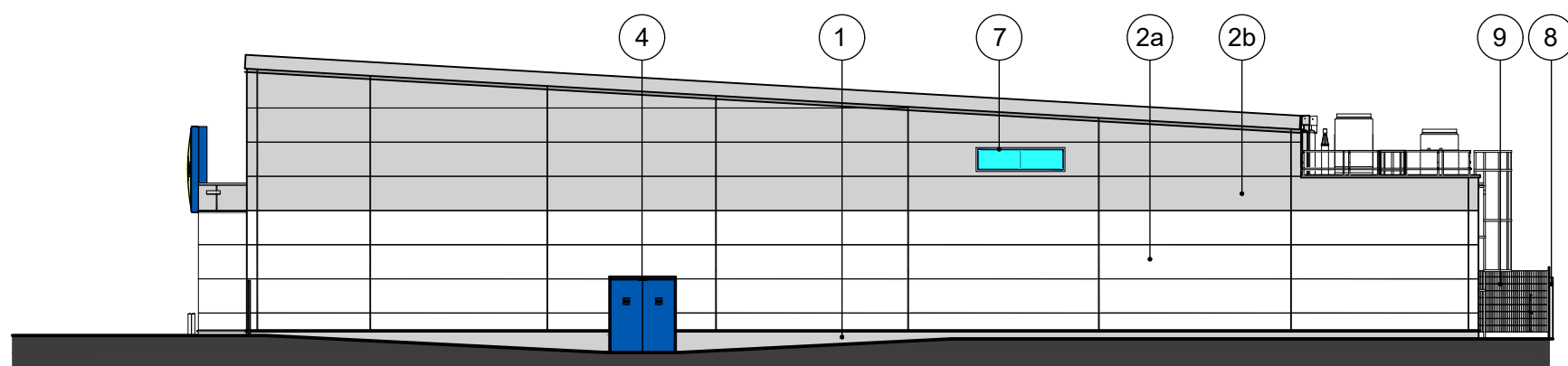
NORTH ELEVATION



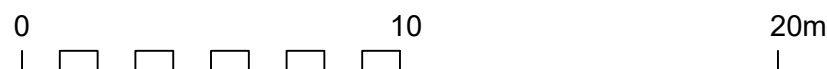
SOUTH ELEVATION



EAST ELEVATION



WEST ELEVATION



Materials - key to codes

- External Wall Render**
Low level plinth with fair face float finished waterproof mineral render in 2 layers to 20mm thickness. Render to be painted to comply with BS 6150. Colour: Grey, RAL 9006.
- External wall cladding**
Metal composite insulated panel wall cladding.
a) Low level colour: White, RAL 9010.
b) High level colour: Metallic Silver, RAL 9006.
- Roof covering**
Metal composite insulated panel roof cladding. Colour: Metallic Silver, RAL 9006.
- External doors**
Steel doors and frames, powder coated internally and externally. Colour: Gentian Blue, RAL 5010 to 80% gloss finish.
- Sectional doors**
Delivery area insulated sectional doors: 2600mm (W) x 2600mm (H). External colour: Gentian Blue, RAL 5010.
- Dock shelter**
Model DSL, 3250mm x 3250mm x 500mm projection and 900mm head curtain, with galvanised steel collapsible linkarm frame. Front curtains polyester monofilament 3mm PVC coated to both sides. Colour: Black, with safety marker stripes.
- Shopfront glazing, entrance lobby and windows**
Structural aluminium glazing sections by Schueco. All glazing panels to be double-glazed, with laminated safety glass, 8.8 / 16 / min 8.8mm glass unit. Voids argon filled. Inner pane with low-E soft coat. Entrance pod, automatic doors, shopfront glazing and window profiles powder coated Gentian Blue, RAL 5010 on both faces to 30% gloss finish.
- Boundary fence**
New 1.8m height close boarded timber fence, with 300mm height trellis fixed to top rail. 2.1m total height.
- Gate**
New paladin gate and fence. Colour: RAL 7037.
- Gutters and rainwater downpipes**
Aluminium gutters and downpipes. Colour: Metallic Silver, RAL 9006
- Photovoltaic (PV) system**
Photovoltaic panel array to specialist manufacturer's details.

Client

Lidl Great Britain Ltd

Project

Lidl
Rainham Road, Rainham

Title

Elevations as Proposed

Drawing Ref.	Revision	
4781-0400	P05	
Scale - unless otherwise stated	Status	Issued For
1:200 @ A3	S0	Preliminary

KLH architects
The Old Steelyard, Poplar Lane
Sproughton, Ipswich, IP8 3HL
t.01473 689532
klh@klharchitects.com
www.klharchitects.com